

OFF ROAD

Power Units

CURSOR 13

CURSOR 13

375 kW (510 HP) @ 2100 rpm

Stage III A - Tier 3

SPECIFICATIONS

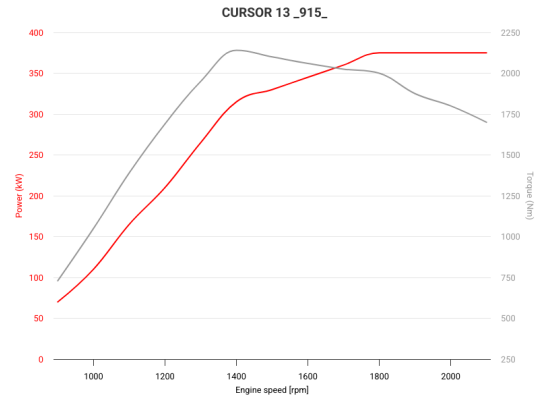
No. of cylinders / valves	6L / 4	
Injection System	EUI	
Turbocharger	TCA	
Displacement	liters	12.9
Bore x Stroke	millimeters	135 x 150
Rated power	kW (HP) @ rpm	375 (510) @ 2100
Max Torque	Nm @ rpm	2140 @ 1400
ATS	-	
Certification	Stage III A - Tier 3	

WEIGHT AND DIMENSIONS

Dimensions (L x W x H)	mm	1927 x 1134 x 1781
Dry Weight	Kg	-

DIMENSIONS CAN BE CHANGED ACCORDING TO ENGINE OPTIONS

POWER & TORQUE



IMAGES SHOWN ARE FOR ILLUSTRATION PURPOSE ONLY

POWER UNITS

Do you want to know more?

LEGEND

Air Handling

NA (Naturally Aspirated)
TC (Turbocharged)
TCA (Turbocharged with aftercooler)

Turbocharger

WG (Wastegate)
VGT (Variable Geometry Turbocharger)
TST (Twin-Stage Turbocharger)

Exhaust System

EGR (Exhaust Gas Recirculation)
SCR (Selective Catalytic Reduction)
DOC (Diesel Oxidation Catalyst)
DPF (Diesel Particulate Filter)

FOR INFORMATION ON THE AVAILABLE RATINGS NOT LISTED IN THIS DOCUMENT PLEASE CONTACT THE FPT INDUSTRIAL SALES NETWORK OR VISIT OUR SITE WWW.FPTINDUSTRIAL.COM

SPECIFICATION SUBJECT TO CHANGE WITHOUT NOTICE

