



INDUSTRIAL POWER UNIT

**Our efficiency.
Your edge.**

Index	3
Introduction	4
The R Series	18
The F28 Series	20
The F5 Series	22
The NEF Series	24
The CURSOR Series	26
Customer Service	28

ABOUT FPT INDUSTRIAL

FPT Industrial is a Brand of Iveco Group, dedicated to the design, production, and sale of powertrains and solutions for on- and off-road vehicles, as well as marine and power generation applications.

At FPT Industrial, sustainability is a common underlying commitment, through the entire product development and as a corporate approach.

The extensive product offering includes six engine ranges with power outputs from 30 hp to over 1,000 hp, transmissions with torque up to 500 Nm and front and rear axles from 2.45 to 32 tonne GAW (Gross Axle Weight).

FPT Industrial offers the most complete line-up of natural gas engines for on- and off-road applications on the market, with power outputs ranging from 50 to 520 hp.

A dedicated ePowertrain division is accelerating the path towards net zero-emissions mobility with electric drivelines, battery packs, and battery management systems. This extensive offering and its strong focus on R&D makes FPT Industrial a world leader in industrial powertrains and solutions.

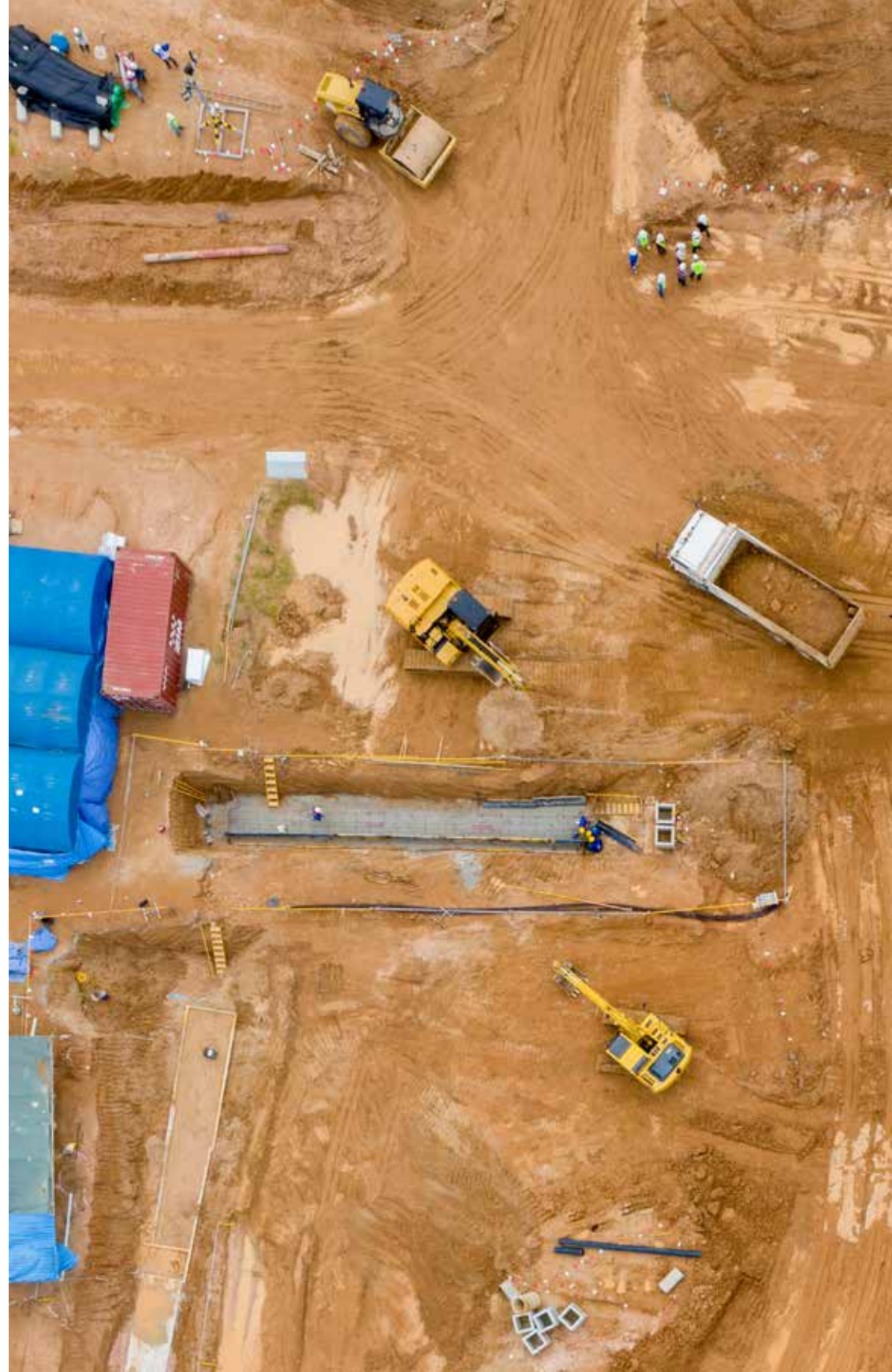
We are proud to be a sustainability and innovation driven Company, which builds Customer advantage through continuous research and improvement and creates value by leveraging this advantage.

FPT Industrial: powering innovation

FPT Industrial presents a comprehensive range of plug&play power units, tailored to meet the most demanding and diverse application needs. From irrigation and de-watering pumps to ground support for airlines, our wide line-up offers efficient quick-to-market solutions for our customer.

Powered by a versatile range of engines – from compact 2.8 L models to robust 12.9 L powerhouses – our power units deliver exceptional performance and reliability. Whether you require unregulated engines or those compliant with stringent Stage V/Tier 4 Final emissions standards, our compact, pre-assembled power units simplify installation and reduce your overall operating costs.

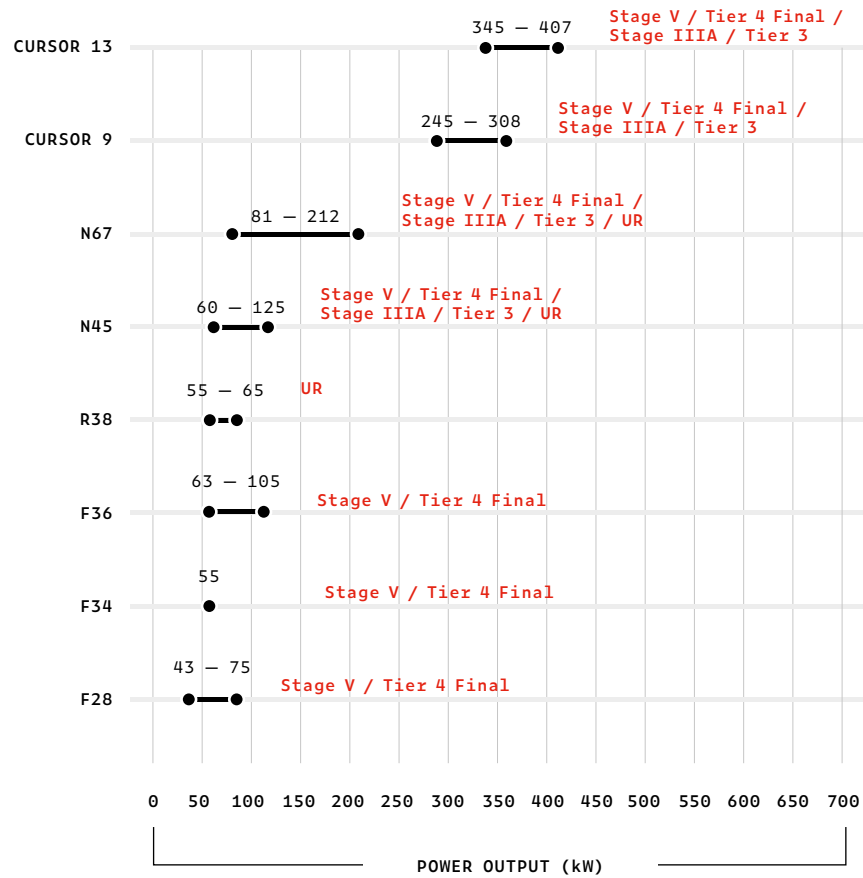
At FPT Industrial, we do more than simply provide engines. It's about powertrains, with a trusted partner, dedicated to exceeding expectations. An ongoing commitment to pursue cutting edge innovation and customer satisfaction through delivering innovative solutions, with the aim of exceeding the most demanding industry standards.





**We innovate constantly.
We increase the benefits for
end users and create value
for the businesses we serve.**

Industrial Power Unit Portfolio Overview



Quick-to-market solutions

Performance

- High power density.
- Excellent torque response guaranteed in the most severe operating conditions.

Respect for the Environment

- Worldwide compliance with the most stringent emissions legislation.

Low Total Cost of Ownership

- Best in class service intervals.
- Low fluid consumption.
- Maintenance free after-treatment system.

Smart Installation

- Fully-assembled and pre-validated solution.



Stage V / Tier 4 Final

Engine Name	Engine Model	Displacement Litres	Cylinder Arrangement Air intake	Injection System	Exhaust System	Exhaust Components	Power			Torque	
							kW	HP	RPM	Nm	RPM
F28	F28ESVP04.A43	2.8	41/TC	ECR	EGR+DOC+DPF	EGR+DOC+DPF	43	58	2500	250	1400
F28	F28ESVP04.A55	2.8	41/TC	ECR	EGR+DOC+DPF	EGR+DOC+DPF	55	75	2500	260	1800
F28	F28ESVP04.A55	2.8	41/TAA	ECR	EGR+DOC+DPF	EGR+DOC+DPF	55	75	2500	375	1400
F28	F28ETVP04.A75 *	2.8	41/TAA	ECR	Compact Hi-eSCR2	EGR+DOC + DPF + SCR-T	75	101	2300	416	1500
F34	F34TEVP03.00 **	3.4	41/TC	ECR	EGR+DOC+DPF	EGR+DOC+DPF	55	75	2500	314	1400
F36	F36ETVP04.A63	3.6	41/TAA	ECR	Compact Hi-eSCR2	EGR+DOC + DPF + SCR-T	63	84	2300	354	1400
F36	F36ETVP04.A75	3.6	41/TAA	ECR	Compact Hi-eSCR2	EGR+DOC + DPF + SCR-T	75	101	2300	430	1400
F36	F36ETVP04.A90	3.6	41/TAA	ECR	Compact Hi-eSCR2	EGR+DOC + DPF + SCR-T	90	121	2300	490	1400
F36	F36ETVP04.A105	3.6	41/TAA	ECR	Compact Hi-eSCR2	EGR+DOC + DPF + SCR-T	105	141	2300	600	1500
N45	N45ETVP04.A103	4.5	41/TAA	ECR	Hi-eSCR2	DOC+SCRoF+CUC	103	138	2200	638	1500
N45	N45ETVP04.125A00	4.5	41/TAA	ECR	Hi-eSCR2	DOC+SCRoF+CUC	125	168	2200	712	1500
N67	N67TEVP04.00	6.7	61/TAA	ECR	Hi-eSCR2	DOC+SCRoF+CUC	129	173	2200	802	1500
N67	N67TEVP08.00	6.7	61/TAA	ECR	Hi-eSCR2	DOC+SCRoF+CUC	151	202	2200	940	1500
N67	N67TEVP03.00	6.7	61/TAA	ECR	Hi-eSCR2	DOC+SCRoF+CUC	191	256	2200	1159	1500
N67	N67TEVP07.00	6.7	61/TAA	ECR	Hi-eSCR2	DOC+SCRoF+CUC	212	284	2200	1160	1500
Cursor 9	C87TEPV03.00	8.7	61/TAA	ECR	Hi-eSCR2	DOC+SCRoF+CUC	245	329	2100	1510	1500
Cursor 9	C87TEPV06.00	8.7	61/TAA	ECR	Hi-eSCR2	DOC+SCRoF+CUC	275	369	2100	1675	1500
Cursor 9	C87TEVP07.00	8.7	61/TAA	ECR	Hi-eSCR2	DOC+SCRoF+CUC	308	413	2100	1800	1500
Cursor 13	C13TEVP04.A346	12.9	61/TAA	ECR	Hi-eSCR2	DOC+SCRoF+CUC	346	464	2100	2012	1400
Cursor 13	C13TEVP04.A384	12.9	61/TAA	ECR	Hi-eSCR2	DOC+SCRoF+CUC	384	515	2100	2258	1400
Cursor 13	C13TEVP04.A407	12.9	61/TAA	ECR	Hi-eSCR2	DOC+SCRoF+CUC	407	546	2100	2401	1400

* Stage V only ** From 2025 it will not be possible to have double homologation for the same hardware.

Legend

Cylinder Arrangement

L In line

Air Intake

- NA Natural Aspirated
- TAA Turbocharged Aftercooler
- TC Turbocharged

Exhaust System

- EGR Exhaust Gas Recirculation
- DOC Diesel Oxidation Catalyst
- DPF Diesel Particulate Filter
- SCR Selective Catalytic Reduction
- SCRoF Selective Catalytic Reduction on Filter
- CUC Clean Up Catalyst
- Hi-eSCR2 FPT Industrial's patented ATS system

Injection System

- M Mechanical
- ECR Electronic Common Rail
- EUI Electronic Unit Injector

Stage III / Tier 3

Engine Name	Engine Model	Displacement Litres	Cylinder Arrangement Air Intake	Injection System	Power			Torque	
					kW	HP	RPM	Nm	RPM
N45	N45MSSX02.50A800	4,5	4l/TC	M	66	90	2200	400	1250
N45	N45MSSX00.50A800	4,5	4l/TC	M	74	100	2200	430	1250
N45	N45MSTX20.50A800	4,5	4l/TAA	M	93	126	2200	525	1250
N67	N67MNTX20.00A800	6,7	6l/TAA	M	129	175	2200	770	1250
N67	N67ENTX20.00A800	6,7	6l/TAA	ECR	175	238	2200	1020	1500
Cursor 9	C87ENTX20.00A800	8.7	6l/TAA	ECR	260	353	2100	1500	1400
Cursor 13	C13ENTX20.00A800	12.9	6l/TAA	EUI	375	510	2100	2140	1400

* Stage V only ** From 2025 it will not be possible to have double homologation for the same hardware.

Legend

Cylinder Arrangement

L In line

Air Intake

NA Natural Aspirated
 TAA Turbocharged Aftercooler
 TC Turbocharged

Exhaust System

EGR Exhaust Gas Recirculation
 DOC Diesel Oxidation Catalyst
 DPF Diesel Particulate Filter
 SCR Selective Catalytic Reduction
 SCRoF Selective Catalytic Reduction on Filter
 CUC Clean Up Catalyst
 HI-eSCR2 FPT Industrial's patented ATS system

Unregulated

Engine Name	Engine Model	Displacement Litres	Cylinder Arrangement Air Intake	Injection System	Power			Torque	
					kW	HP	RPM	Nm	RPM
R38	R38MSNS04.55A02	3,8	4l/TC	M	55	75	2500	290	1800
R38	R38MSNS04.65A02	3,8	4l/TC	M	65	88	2500	320	1700
N45	N45MSAA00.50A800	4,5	4l/NA	M	60	82	2300	320	1400
N67	N67MSAE00.00A800	6,7	6l/NA	M	81	110	2500	440	1400
N67	N67MSTD23.00A800	6,7	6l/TAA	M	120	163	2300	630	1400

Injection System

M Mechanical
 ECR Electronic Common Rail
 EUI Electronic Unit Injector

THE R SERIES



Power range
From 55 to 65 kW

Engine model
R38 (4 cyl., 3.8L)

Emission level
Unregulated

Key Advantages

Engine Architecture

- 3.8L engine platform.
- Compact 4-cylinder power unit, complete with engine, cooling pack and air cleaner for a limited footprint.
- Simple and reliable mechanical injection system.

Performance

- Power outputs from 55kW to 65kW.
- Impressive power and torque response, suitable for a wide range of applications.

Total Cost of Ownership

- Single-side servicing facilitates and speeds up maintenance activities.

THE F28 SERIES

**Power range**

From 43 to 75 kW

Engine model

F28 (4 cyl., 2.8L)

Emission level

Stage V / Tier 4 Final

Key Advantages

Engine Architecture

- Cutting-edge Common Rail technology, turbocharged with 2 valves per cylinder.
- Quick-to-market solutions thanks to pre-assembled cooling pack, air cleaner and ATS.

Performance

- Best in class performance in its category in an extremely compact package.
- Excellent fluid consumption in all conditions.

Total Cost of Ownership

- Reduced maintenance needs and operating costs thanks to best in class oil service interval (600 hours).
- Single-side servicing offers fast accessibility and maximises uptime.

After-Treatment System

- Smart integration made possible by the ATS installed on the engine.
- Available in a dedicated DPF-free version for Tier 4 final.

THE F5 SERIES

**Power range**

From 55 to 105 kW

Engine model

F34 (4 cyl., 3.4L)

F36 (4 cyl., 3.6L)

Emission level

Stage V / Tier 4 Final

Key Advantages

Engine Architecture

- Cutting-edge Common Rail technology, turbocharged with 4 valves per cylinder.
- Quick-to-market solutions thanks to pre-assembled cooling pack, air cleaner and ATS.

Performance

- Excellent performance in terms of torque response with low fluid consumption in all conditions.
- High power density.

Total Cost of Ownership

- Best in class oil service interval (600 hours).
- Single-side servicing offers fast accessibility and maximizes uptime.

After-Treatment System

- Smart integration made possible by the ATS installed on the engine.
- Available a dedicated DPF-free version for Tier 4 final.

THE NEF SERIES



Power range
From 60 to 212 kW

Engine model
N45 (4 cyl., 4.5L)
N67 (6 cyl., 6.7L)

Emission level
Stage V / Tier 4 Final
Stage IIIA / Tier 3
UR

Key Advantages

Engine Architecture

- Common rail injection system or mechanical rotary pump depending on emission level, 4 valves per cylinder.
- Quick-to-market solutions thanks to pre-assembled cooling pack and air cleaner.
- Stage V/Tier 4 Final version: EGR free combustion and ATS mounted on the engine.

Performance

- Excellent performance in terms of torque response with low fluid consumption in all conditions.
- High power density.
- Versatile power unit, suitable for a wide range of applications.

Total Cost of Ownership

- Reduced maintenance needs and operating costs thanks to best in class oil service interval (600 hours).

After-Treatment System (only Stage V/Tier 4 final version)

- ATS with patented technology HI-eSCR2.

THE CURSOR SERIES



Power range

From 245 to 407 kW

Engine model

Cursor 9 (6 cyl., 8.7L)
Cursor 13 (6 cyl., 12.9L)

Emission level

Stage V / Tier 4 Final
Stage IIIA / Tier 3

Key Advantages

Engine Architecture

- Electronic injection system, turbocharged with 4 valves per cylinder
- Quick-to-market solutions thanks to pre-assembled cooling pack and air cleaner.
- Stage V/Tier 4 Final version: EGR free combustion and ATS mounted on the engine.*

Performance

- Excellent performance in terms of power and torque response with low fluid consumption in all conditions.
- Versatile power unit, suitable for a variety of heavy-duty application.

Total Cost of Ownership

- Reduced maintenance needs and operating costs thanks to best in class oil service interval (600 hours).

After-Treatment System (only Stage V/Tier 4 final version)

- ATS with patented technology HI-eSCR2.

* ATS mounted only for C9 engine



***YOU ASK
FOR THE
BEST.
WE MAKE
IT HAPPEN.***

When the market becomes increasingly challenging, it is essential to have reliable partners.

We work closely with you to provide tailor-made solutions, maximizing engine performance and durability. We are committed to doing everything possible to support you and your business.


Extended Warranty. Everyday closer to your needs.

On top of the Base Warranty, it is possible to register for our Extended Warranty program, which covers all required FPT Industrial Genuine parts along with any repairs carried out by highly qualified technicians.

The FPT Industrial Extended Warranty guarantees:

- Customizable offer according to your needs.
- Warranty costs of your FPT Industrial Product are known in advance.
- Assistance carried out by FPT Industrial qualified technicians.
- Optimal Product performance thanks to FPT Industrial Genuine Parts.

Our FPT Industrial Extended Warranty has been developed with the aim of being closer to you in your everyday activities. You can customize it according to your needs and extend it for up to five years. To request a quote, please contact your reference FPT Industrial Dealer.

OPERATING KM	COVERAGE	DURATION
 <p>Max. limit depending on rating <input type="checkbox"/> Up to 5.000 hrs</p>	<input type="checkbox"/> BRONZE Main Engine components only* <input type="checkbox"/> SILVER Engine Only <input type="checkbox"/> GOLD Engine + Aftertreatment System	<input type="checkbox"/> 2 Years <input type="checkbox"/> 3 Years <input type="checkbox"/> 4 Years <input type="checkbox"/> 5 Years

(*) List of main components: cylinder head; cylinder block; crankshaft; camshaft; connecting rod; pistons; timing gears; flywheel; flywheel housing; oil pump; exhaust manifold; engine control unit.

Proactive Assistance. Your direct connection to the Control Room.

Thanks to our Telematic systems, ensuring optimal engine performance and smooth operation has never been easier. Installing the Telematic Kit on your engine will allow the FPT Control Room to analyse your engine data in real-time. Through this advanced system, we can promptly detect any action that will maximize the performances of your vehicle.

Our dedicated team is always ready to provide prompt assistance and support. With this proactive approach, we can address any potential issues, ensuring that your engine performs at its best.

Experience the convenience of enhanced engine performance and the peace of mind that comes with our close monitoring and support.

- Engine Status monitoring.
- Maximize uptime thanks to the prompt activation of the FPT Industrial Service, which is informed about the issue in advance, before even leaving the workshop, supported by remote pre-diagnostics.
- Engine diagnostics and repair based on FPT Industrial technical know-how and field experience.
- Monitor the performance of your agricultural vehicle/tractor in real time, with periodic reports tailored to your mission.
- Total cost of ownership reduced by minimizing downtime.



RAS - Remote Assistance Support. Ready to provide digital assistance.

Remote Assistance, the latest assistance tool introduced by FPT Industrial, is designed to lead the users into a new digital and innovative experience.

This user-friendly solution is remarkably easy to install and use. All it takes is for a technician to plug the Dongle into the machine's OBD (On-Board Diagnostics) port and configure it through the FPT Industrial RAS Workshop APP.

Remote Assistance allows for the efficient diagnostics and troubleshooting of specific errors or fault codes, allowing the engine to be restored quickly to its normal operating conditions.

FPT Industrial has developed this product specifically for their engines, drawing upon their expertise and engineering knowledge.

It is meticulously designed to meet Customers' needs, offering maximum reliability and comprehensive coverage across their range of engines.

As an official diagnostic tool, it remains in perfect alignment with the latest engine updates, including the incorporation of specific error codes.

Main features:

- Maximizes uptime by immediate remote assistance.
- Complies with ECU regulations: over-the-air DPF service regeneration and error reset.
- Enables remote real-time pre-diagnosis through the Workshop Portal.



Genuine Parts. Original is better.

Our Genuine Parts are manufactured with the same rigorous procedures and premium materials as your FPT Industrial engine. They ensure:

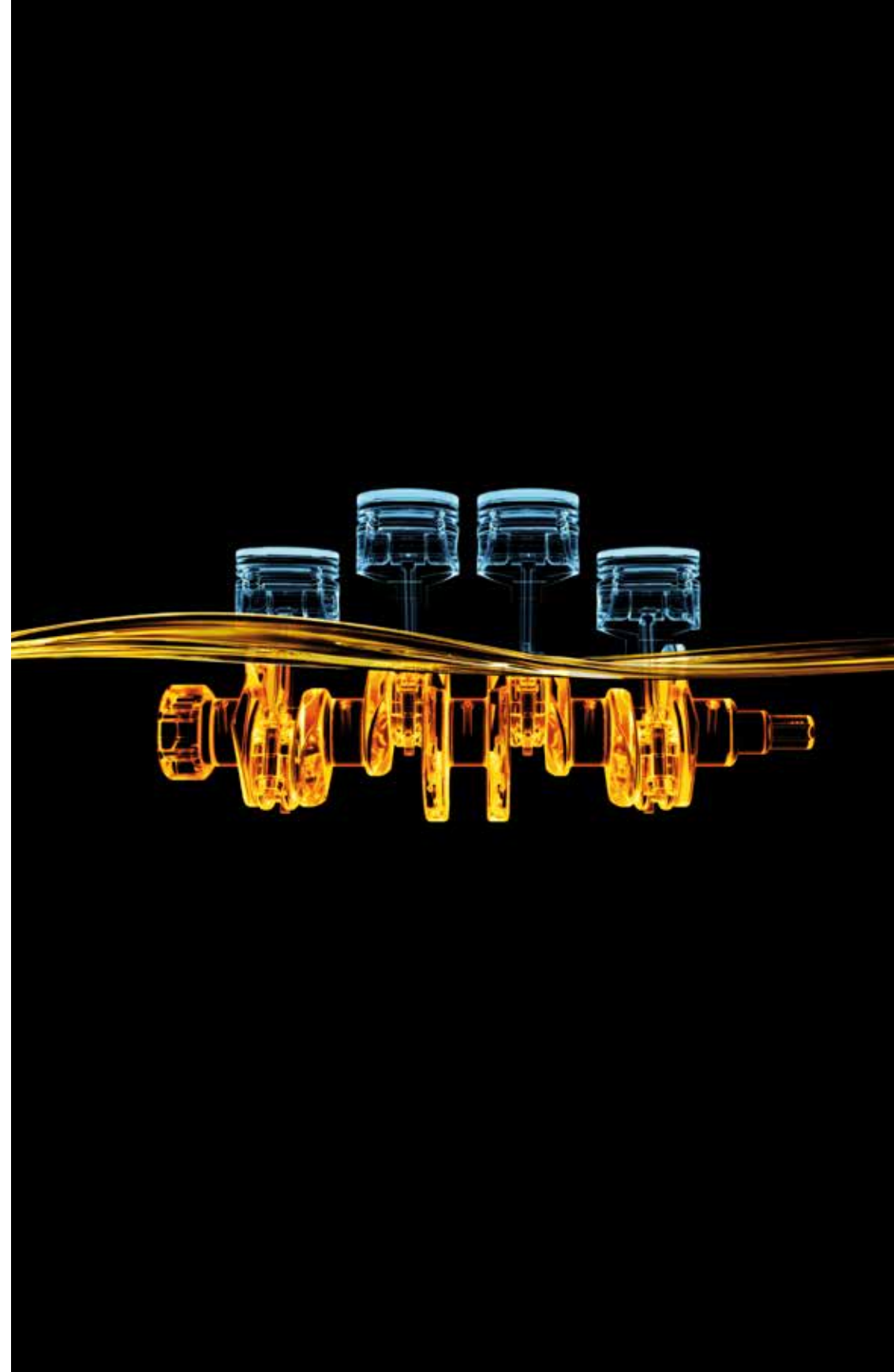
- **Total Compatibility:** guaranteed to perfectly fit with your engine.
- **Optimized Service Life:** exceptional durability without compromising engine performance.
- **Guaranteed Operation:** for optimal engine output.

By choosing FPT Industrial Genuine Parts, you maintain the best conditions just like from the manufacturing plant, maximizing engine output and uptime. Our network of Authorised Workshops features highly qualified technicians ready to expertly assist you in achieving peak engine efficiency.

Genuine Oils. The perfect combination.

FPT Industrial Genuine Engine Oils are designed with the Customer's missions in mind. Developed for exceptional performance under any condition, our lubricants deliver:

- **Enhanced Protection & Durability:** extended engine life and minimized downtime with superior wear and tear resistance.
- **Maximized Uptime & Fuel Efficiency:** our core focus is to keep your equipment running at full efficiency. FPT Industrial Fluids have been developed to ensure the highest level of cleanliness, protection and efficiency, resulting in:
 - +87% cleaner pistons and +68% improved top ring protection.
 - +41% Cylinder Wear protection.
 - +20% improved Soot Handling and Sludge Control.
 - -20% in Total Cost of Ownership (TCO).
 - Reduced fuel and oil consumption for a greener future



You need help? We are here for you.

Because you never stop, and neither do we. Our Customer Contact Centre is active 24/7, to assist you and to activate our local support network.

For any issue or need, our technical and expert support service is ready to help you anytime, anywhere.

If you need technical support or assistance on-site, you can rely on a global network of 70 dealers and over 900 Service Points.

Discover our global dealers' network:





All the pictures, drawings, illustrations and descriptions contained in this brochure are based on product information available to FPT Industrial at the time of printing (3/10/2024). Some of the engine line-ups may refer to a specific market configuration which may not be present or offered for sale available in all other markets. The colors featured in this brochure may differ from the originals. FPT Industrial reserves the right to introduce any modifications, at any time and without any prior advance notice, to design, material, components equipment and/or technical specifications.

